



RESOR
Interreg Europe



European Union
European Regional
Development Fund

Regional Council of Guadeloupe

M. Julien LAFFONT, Head of the Water and Energy Unit

RESOR Kick-off meeting

11th July 2018

Las Palmas de Gran Canaria

Where we are



What we do

The Regional Council of Guadeloupe is in charge of :

Economic Development and innovation

- Regional strategy for economic development and internationalization

Area covered :

- R&D
- Small and medium businesses
- Tourism industry
- Address opportunities on the Caribbean market
- Employment
- Digital economy

Management of the European Programs

- Managing authority
- Follow up and implementation of the : ERDF, ESF, EAFRD, EMFF

Secondary, higher education, culture and social issues

- Building, operation and maintenance of secondary schools
- Regional strategy for higher education, research and innovation

Territorial Planning and Environment

- Territorial equality
- Establishment of infrastructures of regional interest
- Connexion of rural areas
- Housing
- Energy planning and management
- Climate change mitigation and adaptation
- Air pollution
- Biodiversity
- Waste management
- Water management

Public Transportation

- Organization of public inter-urban transportation at regional level

What we do

In the field of energy :

Energy roadmap

- Long-term planning : 2028
- Complies with national law on energy transition (2015)
- Targets on :
 - Demand side energy management
 - Development of renewable energies

Making local laws and regulation

- Specificity of outermost regions in accordance with Art. 73 of the French Constitution
- Since 2009, ability to make laws and regulation on :
 - Demand side management,
 - Energy planning,
 - Energy efficiency in buildings.

Permitting of PV and wind power plants

- Control of land use
- Multidisciplinary evaluation commission
- Permission to connect projects to the grid

Support

- Management of the ERDF on Energy
- Calls for project :
 - Energy efficient buildings,
 - PV self consumption,
 - Clean mobility,
 - Street lighting

Energy management

- Implementation of national regulation on energy management
- Capacity building
- Raising public awareness
- www.guadeloupe-energie.gp

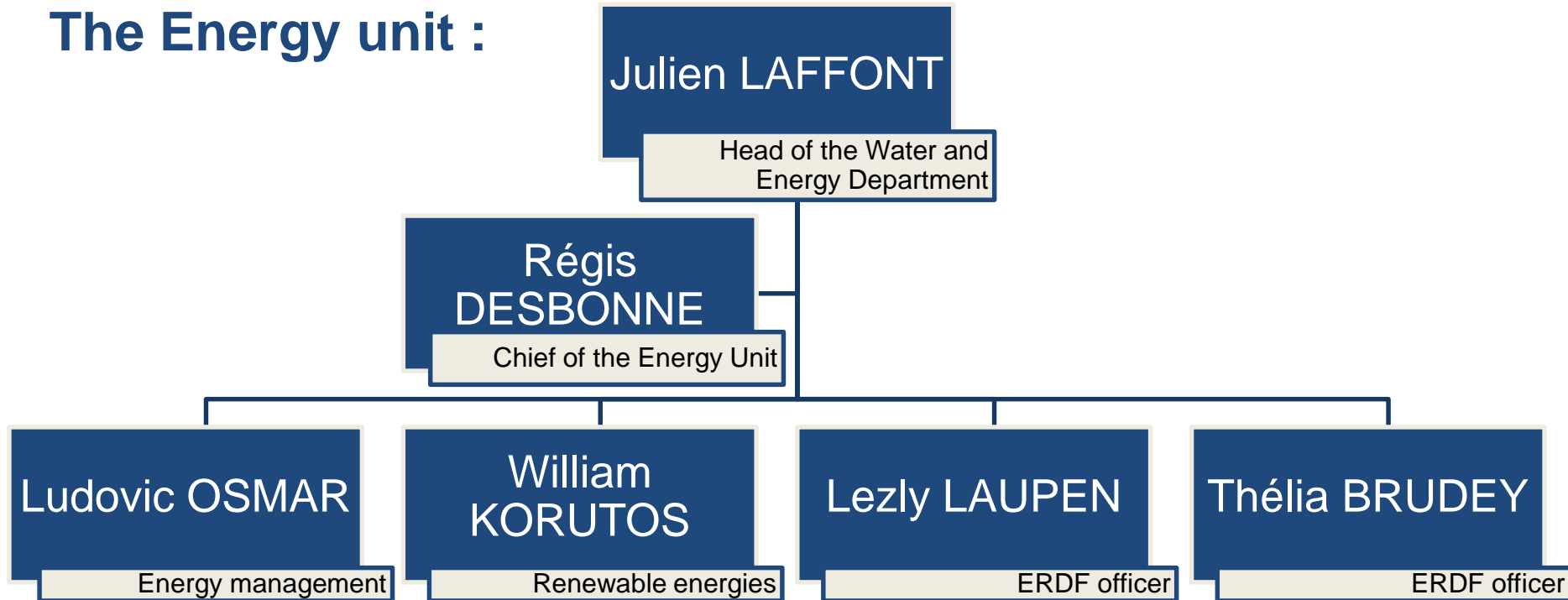
Project team

Regional elected representative in charge of energy:

Mrs Maguy CELIGNY

Vice-president of the regional council of Guadeloupe, president of the energy commission.

The Energy unit :



OVERVIEW: GUADELOUPE

Our territory

Fast figures

Guadeloupe 398 000 inhabitants

6 inhabited islands archipelago

1 628,4 km²

8,4 billions € GDP (2016)

Tourism: international airport, cruise terminal, maritime connections with the Caribbean

Agriculture: sugar cane, banana, rhum

ERDF Operational Programme

Investment priorities of the OP

Enhance SME competitiveness

- IP 3d – developing and implementing new business models for SMEs, in particular to help them internationalize their activities

Support the shift towards a low-carbon economy in all sectors

- IP 4a – promoting the production and distribution of renewable energy sources
- IP 4c – supporting energy efficiency and renewable energy use in public infrastructures, including public buildings and in the housing sector

Promote climate change adaptation, risk prevention and management

- IP 5b – promoting investment to address specific risks, ensuring disaster resilience and developing disaster management systems

Protect the environment and promote resource efficiency

- IP 6c – protecting, promoting and developing cultural and natural heritage

Promote social inclusion and combat poverty

- IP 9a – investing in health and social infrastructure, thereby contributing to national, regional and local development, reducing inequalities in terms of health status

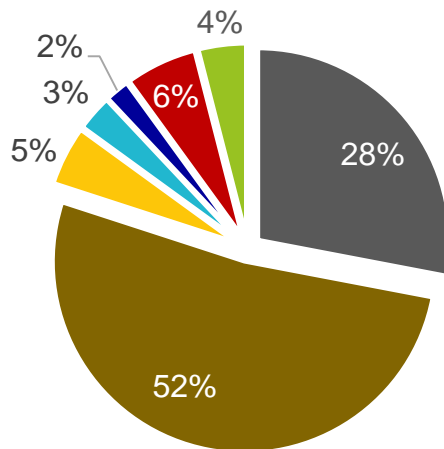
Invest in education, skills and lifelong learning by developing education and training infrastructures

- IP 10a – investing in education, skills and lifelong learning by developing education and training infrastructures

Energy efficiency and renewables: state of the art in the territory

Climate and Energy Regional Observatory






Electricity production 2017
1 757 GWh



■ Coal ■ Oil ■ Photovoltaic ■ Wind
■ Hydropower ■ Geothermal ■ Bagasse

Share of renewables 2017 : **20,49 %**

Renewables :

| | |
|--|---------------|
|  Solar PV : | 70 MW |
|  Wind : | 26 MW |
|  Geothermal : | 15 MW |
|  Biomass : | 3 MW |
|  Hydro : | <u>11 MW</u> |
| | 125 MW |

Total installed capacity : **554 MW**

Peak load (2016) : **261 MW**

Energy efficiency and renewables: relevant policies and initiatives

Energy roadmap (*PPE*) 2019 / 2028 :

- Energy management : tackle the growth of energy demand
- Renewables : 50% of electricity supply by 2023 and energy “self-sufficiency” by 2030
- Assessment of social, environment and economic impacts,
- Needs for additional knowledge on energy related issues.

Local energy laws and regulation :

- A specificity of outermost territories of France based on the Constitution (Art. 73)
- Has to be compliant with EU and French law
- Since may 2009
- Applies to energy efficiency, energy planning, development of renewables and energy efficiency in buildings.



RESOR

Interreg Europe



European Union
European Regional
Development Fund

Thank you !

julien.laffont@cr-guadeloupe.fr

Questions welcome